

ENGINES

Cummins ISM Diesel.

Type: 6 cylinder, in line, turbocharged, aftercooled, electronic direct injection with cruise control.

Displacement: 10.8 litre. RAC H.P. rating: 58.1

Gross Ratings:	Power (kW)	Torque (Nm/lb ft)	Governed speed
ISM 330	254	1830/1350	1800
ISM 350	272	1830/1350	1800
ISM 370	276	1966/1450	1800
ISM 425	317	2101/1550	1800
ISM 450	336	2101/1550	1800

Caterpillar C-12.

Type: 6 cylinder, in line, turbocharged, aftercooled, electronic direct injection with cruise control.

Displacement: 12.0 litre. RAC H.P. rating: 62.9

Gross Ratings:	Power (kW)	Torque (Nm/lb ft)	Governed speed
395hp	295	1966/1450	2100
430hp	321	2237/1650	2100

Detroit Diesel Series 60. DDEC IV

Type: 6 cylinder, in line, turbocharged, aftercooled, electronic direct injection with cruise control.

Displacement: 12.7 litre. RAC H.P. rating: 62.9

Gross Ratings:	Power (kW)	Torque (Nm/lb ft)	Governed speed
400/1450	298	1965/1450	2100
430/1650	321	2237/1650	2100
470/1650	351	2237/1650	2100
500/1650	373	2237/1650	2100
430/500 Cruise power	321/373	2237/1650	2100
Displacement: 14.0 litre. RAC H.P. rating: 65.8			
500/1850	373	2508/1850	2100

Cummins Signature/ISX.

Type: 6 cylinder, in line, turbocharged, aftercooled, electronic direct injection with cruise control.

Displacement: 15.0 litre. RAC H.P. rating: 69.8

Gross Ratings:	Power (kW)	Torque (Nm/lb ft)	Governed speed
ISX - 450	335	2237/1650	1800
ISX - 475	354	2237/1650	1800
Signature 500	373	2508/1850	1900

All engines include compression brake and are fitted with a 406mm Cyclopac dry element air cleaner.

Optional: Dual exhaust. (Mandatory for Series 60 14.0 litre engine.)

Low tare exhaust gantry for single or dual exhaust.

TRANSMISSIONS

Eaton Roadranger, with oil cooler

RTX14710B, RTX16710B 10 speed overdrive.

RTLO14913A, RTLO16913A 13 speed overdrive

RTLO18913A 13 speed overdrive.

RTLO14918B, RTLO16918B 18 speed overdrive.

RTLO18918B, RTLO20918B 18 speed overdrive.

Optional: Alloy clutch housing

REAR AXLE

Meritor RT40-145G

Meritor RT40-145GA

Meritor RT40-145GP

Capacity: 18.1 t.

Ratios: 4.10, 4.33, 4.63

Meritor RT46-160GP

Capacity: 20.9 t.

Ratios: 3.91, 4.10, 4.30, 4.56, 4.89, 5.38

Meritor RT50-160GP

Capacity: 22.7 t.

Ratios: 4.30, 4.56, 4.89, 5.38

Dana Spicer DS454-P (Eaton)

Capacity: 18.1t.

Ratios: 3.90, 4.11, 4.33, 4.63, 4.88

Dana Spicer DS462-P (Eaton)

Capacity: 20.9t.

Ratios: 3.90, 4.11, 4.33, 4.56, 4.88, 5.29

Dana Spicer DS521-P (Eaton)

Capacity: 23.6t.

Ratios: 3.90, 4.11, 4.33, 4.56, 4.88, 5.29

Optional: Driver controlled differential locks.

Alloy hubs, centrifuse drums for 285mm disc wheels.



REAR SUSPENSIONS

Hendrickson HAS400, HAS460, HAS461

Type: Air Capacity: 18.0 t (All)

Neway AD246

Type: Air Capacity: 21.0 t

Meritor AC6P

Type: single point steel spring 6-rod.
Capacity 18.1 t.

Meritor AC6S, AC6S SS

Type: single point steel spring 6-rod.
Capacity 20.9 t.

FRONT AXLE

Spicer I-150

Type: Forged Steel I beam.

Capacity: 6.70t.

Optional: Centrifuge drums and alloy hubs for 285mm PCD wheels.

Spicer I-150S

7.2t capacity

Meritor FG941

6.60t capacity. (Not with 335mm PCD disc wheels.)

FRONT SUSPENSION

Type: Multi-leaf springs 1.57m x 100mm, with threaded pins and bushes and Aeon auxiliary springs. Double acting telescopic shock absorbers.

Capacity: 6.7 t.

Optional: Four leaf parabolic springs, 1.57m x 100mm, 6.5 t capacity.

COOLING SYSTEM

	Up to 2100Nm	Over 2100Nm
Radiator area	7420 cm ²	8380 cm ²
Charge air cooler area	6610 cm ²	7420 cm ²

Aluminium core standard with 7420 cm² radiator.

Air operated clutched fan drive controlled from engine ECM.

CLUTCH

Type: Spicer Twin plate ceramic with air assist.

Diameter: 394 mm. Lining area: up to 1220cm².

Optional: Solo self adjusting clutch.

BRAKES

Type: Dual circuit air system, S cam.

Size: Front 419 dia x 152mm.

Rear 419 dia x 178 mm

Park brake: Rear wheels, spring actuated, modulated control.

Dessicant type air dryer.

Semi-trailer air connections and hand control valve.

Optional: Bosch 4 channel ABS with trailer cable.

Axles prepared for later fitting of ABS.

1060 L/min. compressor for Signature and ISX engines.

STEERING

Sheppard M110 power assisted. Gear driven pump.

Adjustable steering wheel, 460 mm. Diameter

UNIVERSAL JOINTS

1810 Series Spicer needle roller bearing with 1710 series interaxle.

FUEL SYSTEM

Round aluminium tanks (660mm dia.) capacities:

Main Tanks	Total Fuel Vol. (L)
2 x 270	540
2 x 450	900
270 + 270/180Oil	540
450 + 270/180Oil	720

Supplementary tanks*

2 x 270	1440
2 x 360	1620
2 x 450	1800

* Requires 2 x450 main tanks, wheelbase restricted.

Optional: Low tare highway service tank supports and cross braces.

Severe service tank supports.

CHASSIS

Type: Heat treated steel, yield strength: 760 MPa.

	Dimensions (mm)	Section Modulus
Standard	257x89x8	243 cm ³
L Reinforced	241x95x6.5	324 cm ³
C Reinforced	275x97x8	510 cm ³

FRP airdam bumper with steel centre section insert.

#Tapered rear of frame with fifth wheel mounting angles or Square end frame, drilled for rear cross member for tipper versions.

Optional:

Polished alloy centre insert in airdam

Polished alloy bullbar.

Polished alloy HD bumper.

Polished alloy Low tare bumper.

Alloy cross members for Hendrickson HAS type rear suspensions.

Single or double tow hooks.

Alloy deckplate with quick release holdowns

(Only available with inboard batteries.)

ELECTRICAL SYSTEM

Type: 24 volt, negative to earth.

Batteries: 4 x 12V, 540 SAE CCA ea. (Outboard) with Two pole isolation switch.

Alternator: 24V, 100 amps.

70/75 Watt circular headlamps and 100 Watt driving lights in hood. Work light at rear of cab.

Semi trailer 7 pin sockets with 24 or 12 volt output.

Optional: 70 Watt fog or 100 Watt driving lamps in air dam.

Manual reset circuit breakers in lieu of fuses. Inboard batteries.

Maintenance free batteries. (Low tare)

#Trailer connections to rear of frame.

WHEELS & TYRES

Wheels: Steel disc, 10 stud 335mm PCD, 8.25DC x 22.5

Tyres: Front 295/80R22.5, Rear 11R22.5.

Spare wheel & 11R22.5 tyre.

Optional: Plain or polished aluminium disc wheels, 335mm or 285mm PCD.

6 spoke hubs and demountable rims.

285 mm PCD steel disc wheels.

9.00" wide rims or wheels (steer axle only).

Applicable to vocational versions shown opposite.

CAB

Construction

Type: 2280mm wide, all steel, day cab with tilting fibreglass hood and fenders. Four point cab mounting system, with rear air suspension including dual airspring/damper units.

Features

Seats: Driver and passenger - Fully adjustable 'Isri' self leveling air suspension type with headrests, adjustable shock absorber and integral lap sash retractor seat belt. (Folding armrest on passengers)

90° opening doors fitted with electrically operated windows and low level visibility quarter window.

Stowage compartments in overhead console, both doors (and rear cab wall on day cab).

20L insulated food container. (Day cab only.)

Sleeper cabs: Single bunk. Privacy curtains, for windows and bunk area. Lockers below lower bunk, with access to centre section from cab and left side external access door. Under cab lockers each side. (Total locker volume 0.62m³.) With medium roof, 2 stowage compartments above windscreen.

Accessories

Two internal sun visors with shade cloth blinds on side windows. FRP exterior sunvisor.

Aerodynamic electrically adjustable heated mirrors, with kerbside and convex spotter mirrors.

Air conditioning. Heater demister with 4 speed fan.

Roof hatch. (Electrically operated with medium roof)

Twin windscreen wipers/washers, 2 speed with intermittent action. Dual roof mounted air horns.

AM/FM highpower radio cassette with twin speakers.

6 amp 12v power socket on dash.

Provision for cellular phone.

Finish

Exterior panels of double sided zinc coated steel.

Finish: Electro-phoretic deposited undercoat with baked acrylic enamel finish coat. Cab fully trimmed in slate vinyl with seats, bunks and door trims in matching fabric.

Instrumentation & Controls

Electronic speedometer and tachometer, dual needle air pressure gauge, voltmeter, hourmeter, fuel level gauge, engine oil pressure and coolant temperature. Idle shut down timer and digital clock.

Indicator lights in cluster for:- air pressure, parking brake, hazard warning, battery charge, turn signal, parking lights, low & high beam, power divider lock, difflocks, ABS failure, low engine fluid levels, electronic engine diagnostics.

Steering column stalk controls for headlight high/low beam and headlight flash, turn indicator lights and horn, and windscreen wipers and washer.

Instrument panel mounted controls for engine brake and Cruise Control.

Fully adjustable steering column with both height and rake adjustable by a single lever.

Air controls mounted in console to left of driver's seat for Park brake, trailer brakes, interaxle and cross difflocks (where fitted), and rear air suspension dump.

Optional:

Low or Medium roof sleeper cab.

Folding upper bunk for medium roof sleeper.

Aerodynamic roof deflectors with cab side extenders (all cabs).

Cab side extenders for day & low roof sleeper cabs.

Full length fuel tank fairings.

Quad speakers for radio cassette.

AM/FM radio CD player unit with remote control.

12 CD changer unit for radio CD player unit.

VHF CB or UHF radio.

Temperature Gauge Pack: Pyrometer, engine, transmission, and axle oil temperature gauges.

20L Iveco refrigerator (day cab).

15L Engel multi-voltage refrigerator for sleeper cab mounted on slides under lower bunk.

Deletion of insulated food container.

Fixed passenger seat.

Deletion of roof hatch (day cab only).

VOCATIONAL VERSIONS

6500 6x4 (Model Code: GF65)

VOCATION	HIGHWAY		TIPPER DOG	
	Version	Options	Version	Options
Cab	Day	Low or Med. Roof sleeper	Day	Low or Med. Roof sleeper
Wheelbase - m	4.4	4.6, 4.8, 5.0, 5.5	5.0	4.8, 5.5
Engine	ISM330	Refer "ENGINES"	ISM 330	Refer "ENGINES"
Transmission	Roadranger RTX14710B	Refer "TRANSMISSIONS"	Roadranger RTLO14913A	Refer "TRANSMISSIONS"
Rear Axle	RT40-145G	RT40-145GP RT46-160GP Difflocks (both axles).	RT40-145GP	RT46-160GP Difflocks (both axles).
Rear Axle Ratio	4.63	4.10, 4.30, 4.33, 4.56	4.63	4.10, 4.30, 4.33, 4.56
Rear Suspension	Hendrickson HAS400	HAS460/1 AC6P AC6S AD246	Hendrickson HAS460	HAS400 AC6P AC6S AD246
Fuel Tanks	2 x 270L	Refer "FUEL SYSTEM"	270L + 270/180L split fuel/hydraulic tank	450L + 270/180L split fuel/hydraulic tank
Other	Single frame 5th wheel angles & rear frame taper.	L or C frame reinforcement. ABS.	Single frame Outboard batteries, Temp. Taillight mtg. Trailer conn's to rear of frame. Square rear frame.	L or C frame reinforcement. ABS.
GVM - tonne Δ	24.5	up to 28.0	24.5	up to 28.0
GCM - tonne Δ	47.0	up to 72.0	50.0	up to 72.0
Chassis Mass Front tonne § Rear	4.09 3.24		4.15 3.27	
Total	7.33		7.42	
VOCATION	B DOUBLE		HIGHWAY DOUBLE ROADTRAIN	
Ordering Code	Version	Options	Version	Options
Cab	Day	Low or Med. Roof sleeper	Day	Low or Med. Roof sleeper
Wheelbase - m	4.4	4.6, 4.8, 5.0, 5.5	4.8	4.4, 4.6, 5.0, 5.5
Engine	ISX 450	Refer "ENGINES"	ISX 450	ISX 500, Series 60 1060I/min compressor
Transmission	Roadranger RTLO18918B	Refer "TRANSMISSIONS"	Roadranger RTLO18918B	Refer "TRANSMISSIONS"
Rear Axle	RT46-160GP	RT50-160GP Difflocks (both axles).	RT46-160GP	RT50-160GP Difflocks (both axles).
Rear Axle Ratio	4.30	4.10, 4.33, 4.56 4.89, 5.38	4.89	4.10, 4.30, 4.33, 4.56, 5.38
Rear Suspension	Hendrickson HAS460	HAS461, AD246, AC6S	HAS461	HAS460, Neway AD246, AC6S
Fuel Tanks	2 x 450L	Refer "FUEL SYSTEM"	2 x 450L	Refer "FUEL SYSTEM"
Other	Single frame 5th wheel angles & rear frame taper. ABS.	L or C frame reinforcement.	Single frame 5th wheel angles & rear frame taper. Manual circuit breakers	L or C frame reinforcement. ABS.
GVM - tonne Δ	24.5	up to 28.0	24.5	up to 28.0
GCM - tonne Δ	72.0		85.0	up to 131.0
Chassis Mass Front tonne § Rear	4.47 3.49		4.62 3.37	
Total	7.96		7.99	

§ Chassis with cab specified in table with oil, coolant, but no fuel, spare wheel or tyre.

Δ Sales Engineering approval: GVM and GCM, driveline, frame, and suspension combinations are subject to Sales Engineering review.

LIGHT WEIGHT HIGHWAY SERVICE VOCATIONAL VERSIONS

6500 6x4 (Model Code: GF65)

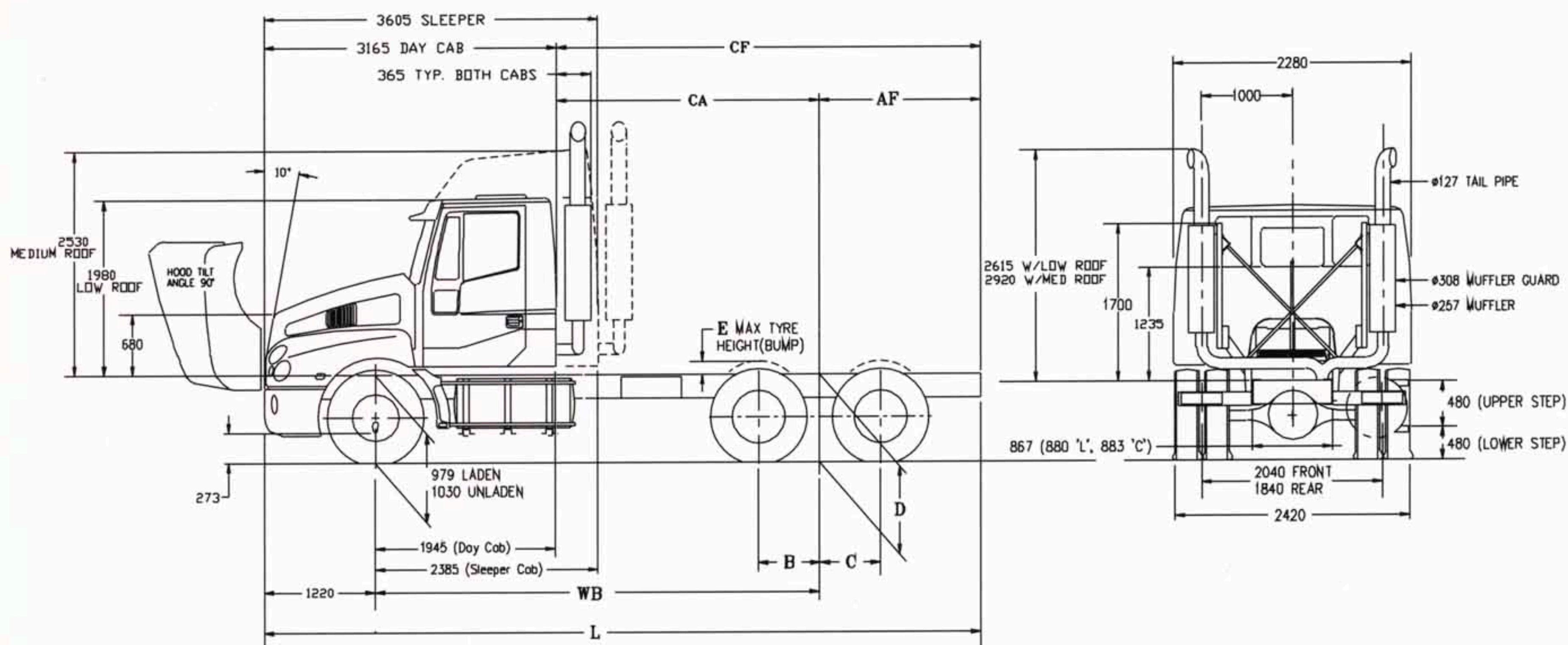
VOCATION		HIGHWAY LOW TARE	
		Version	Options
Cab		Day with fixed passenger seat.	Low or Med. Roof sleeper
Wheelbase - m		4.6	4.6, 4.8, 5.0
Engine		ISM370 with aluminium radiator core	Refer "ENGINES"
Transmission		Roadranger RTX14710B with alloy clutch housing.	Refer "TRANSMISSIONS"
Rear Axle		RT40-145GA Alloy Hubs & Centrifuse brake drums	RT40-145GP
Rear Axle Ratio		4.10	4.33, 4.63
Rear Suspension		Hendrickson HAS400 With Alloy cross members	HAS460
Fuel Tanks		2 x 270L with light wt supports	Refer "FUEL SYSTEM"
Other		<ul style="list-style-type: none"> • Single frame with light wt crossmembers. • 5th wheel angles & rear frame taper. • 6.5 t Parabolic front springs • I-150 with alloy hubs and centrifuse drums • Light weight alloy bumper • Maintenance free batteries • Highway service exhaust gantry • No jack or tools. • Alcoa 285mm PCD alloy wheels. • 275/70R22.5 steer and drive tyres. • Tail light brackets omitted. 	ABS
GVM - tonne Δ		24.5	
GCM - tonne Δ		47.0	Up to 50.0
Chassis Mass	Front	3.90	
tonne §	Rear	2.82	
Total		6.72	
VOCATION		B DOUBLE LOW TARE	
Ordering code		Version	Options
Cab		Day with fixed passenger seat.	Low or Med. Roof sleeper
Wheelbase - m		4.6	4.8, 5.0
Engine		Cat C-12 430 hp, with aluminium radiator core.	Refer "ENGINES"
Transmission		Roadranger RTLO18918B with alloy clutch housing.	Refer "TRANSMISSIONS"
Rear Axle		RT46-160GP With alloy hubs and Centrifuse drums	Difflocks(both axles).
Rear Axle Ratio		3.91	4.10, 4.30, 4.56, 4.89
Rear Suspension		Hendrickson HAS400 With Alloy cross members	HAS460, 461
Fuel Tanks		2 x 450L with light wt supports	Refer "FUEL SYSTEM"
Other		<ul style="list-style-type: none"> • Single frame with light wt crossmembers • 5th wheel angles & rear frame taper. • 6.5 t Parabolic front springs • I -150 with alloy hubs and centrifuse drums • Light weight alloy bumper • Maintenance free batteries. • Highway service exhaust gantry • No jack or tools. • Alcoa 285mm PCD alloy wheels. • 275/70R22.5 steer and drive tyres. • Tail light brackets omitted. • ABS 	
GVM - tonne Δ		24.5	
GCM - tonne Δ		68.0	
Chassis Mass	Front	3.91	
tonne §	Rear	3.09	
Total		7.00	

§ Chassis with cab specified in table with oil, coolant, but no fuel, spare wheel or tyre.

Δ Sales Engineering approval: GVM and GCM, driveline, frame, and suspension combinations are subject to Sales Engineering review.

NOTE: Light Weight components are approved for Highway Service only (>85% sealed roads)

DIMENSIONS



Refer to Bodybuilder diagrams for fuel tank lengths, locations and further details.

SUSPENSION		B	C	D		E
(dimensions in m)				Laden	Unladen	
Rockwell	AC6P	0.620	0.700	0.996	1.055	0.154
Rockwell	AC6S & AC6SS	0.620	0.700	1.016	1.081	0.108
Hendrickson	HAS400/460/461	0.658	0.658	1.000	1.025	0.105
Neway	AD246	0.660	0.660	1.000	1.030	0.130

CHASSIS DIMENSIONS (M)					TURNING CIRCLE (M)
WB	CA	AF	CF	L	Kerb-Kerb Clearance *
4.40	2.45	1.46	3.91	7.08	15.8
4.60	2.65	1.46	4.11	7.28	16.5
4.80	2.85	1.46	4.31	7.48	17.2
5.00	3.05	1.75 ◇	4.80	7.97	17.9
5.00	3.05	1.46	4.51	7.68	17.9
5.50	3.55	1.46	5.01	8.18	19.7

* For wall to wall turning circle add 0.85m.

◇ AF for tipper vocation.

delete 0.44m for sleeper cab.

For further details consult the relevant Bodybuilders diagram.

IMPORTANT

The illustrations, information and specifications ("material") in this brochure were correct at the time of publication but are subject to change without notice. The material is provided by way of general description only, and all measurements and specifications should be regarded as approximate. Availability of the vehicles and other items referred to in this brochure will depend on local and overseas supply conditions from time to time. Accordingly, before placing an order you should consult your nearest authorised International dealer to obtain accurate and up to date information on models, specifications, features, availability and prices.



IVECO

INTERNATIONAL TRUCKS AUSTRALIA LIMITED

A.C.N. 004 065 061

G20B (February 2000)